

# Naturally beautiful light for favourite places.

Design awnings for conservatories, patio roofs and glass rooms

***markilux***

safe timeless beautiful











## Prepare yourself for pleasant temperatures.

Unobstructed view into the garden in a protected environment: Conservatories and covered patios unit the best of indoors and outdoors. markilux design awnings protect conservatories and patio roofs from strong sunlight and high temperatures to let you enjoy valuable moments without limits. Installed either on top of or below the glass roof they ensure a comfortable climate and reliable protection from glare. The high-grade textile shading systems from markilux are both elegant and robust. They reliably withstand wind and weather and provide an inviting ambience. Forget summer and winter time, with markilux the signs always point to “wellbeing”.

***markilux***

# Our design starts with a clear line and frequently ends with a red dot.

**Design awnings “Made in Germany”** As family business in the fourth generation, we have been producing standard-setting awnings for over 40 years. What makes markilux unique is the combination of design awnings and awning covers under one roof. This is “Made in Germany” down to the smallest detail. Our ingenuity shows itself when it comes to making living outdoors even more comfortable. We are never satisfied with good solutions, but would like to become a bit better every day. This permits us to offer the best to our customers in any respect – in perfect combination of form and function.

markilux design awnings are characterised by quality, multi-award-winning design and innovative technology that lend your home that special extra something. Take us at our word with our markilux promise of quality.

**markilux designer awnings** have received a multitude awards:



## Design features

Only the perfect interplay of form and function can turn an awning into a markilux designer awning. To achieve this we rely on the many years of cooperation between our internal development team and external designers. The result: multi-award-winning designer products for your home.



## Quality

During the production of our designer awnings, we attach importance to every detail. High-grade materials and comprehensive quality management ensure that each markilux will enjoy an extremely long service life. As a company we are certified according to the DIN EN ISO 9001 standard. With this we pursue but one objective: The satisfaction of our customers.



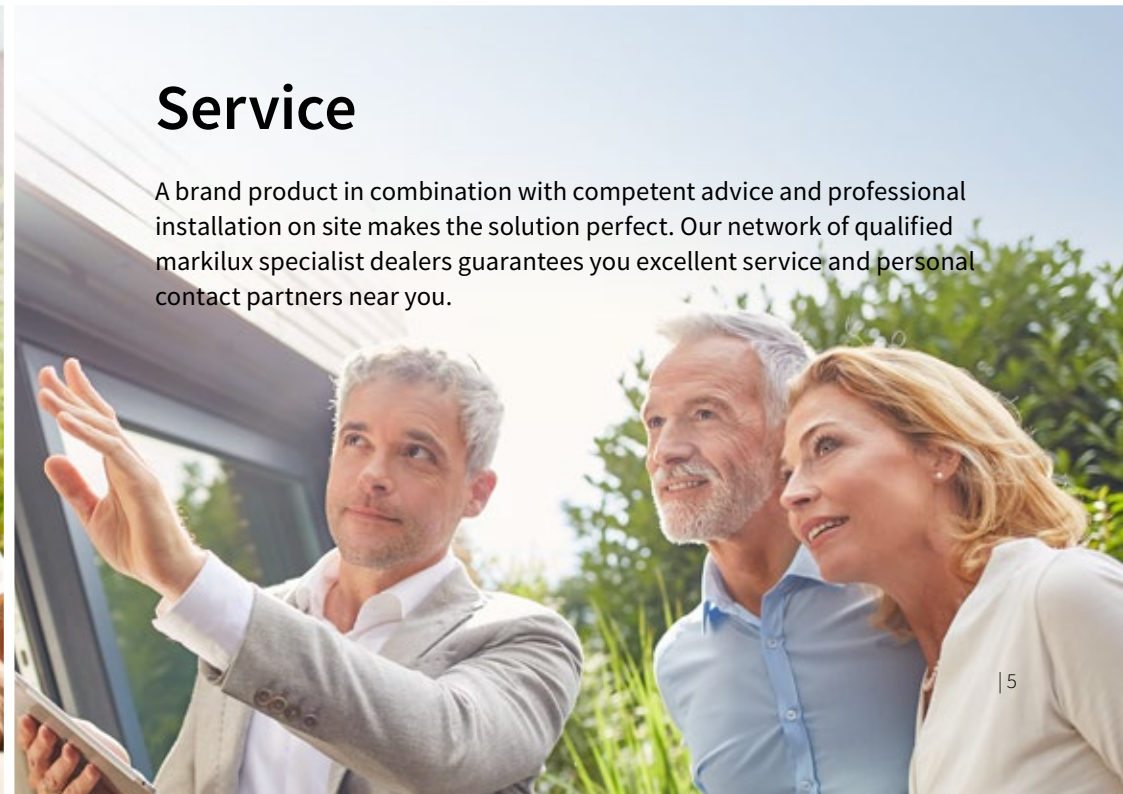
## Function

markilux unites innovative technologies and smart solutions with high-end products. Thanks to the many accessories available, you can enhance your markilux designer awning in accordance with your own personal wishes. The different operating options guarantee the highest degree of comfort.



## Service

A brand product in combination with competent advice and professional installation on site makes the solution perfect. Our network of qualified markilux specialist dealers guarantees you excellent service and personal contact partners near you.









# Always take the weather from the best side.

**Your home. Your markilux.** Would you like to shade your conservatory in a stylish manner? Are you looking for an awning for your patio roof, which unites impressive functionality and attractive design? Then let yourself be inspired by markilux. Select your favourite cover from more than 250 timelessly beautiful patterns and compile the markilux model that perfectly meets your requirements from numerous combination possibilities. Set further highlights with the markilux extras. Lighting and heating modules as well as smart control technologies make comfort perfect and create an atmospheric ambience, in which you can enjoy the weather from the best side at any moment.



**Perfect solutions** Nothing is impossible. Together with our specialist dealers you will find the perfect solution for any requirement.



**Textil ambience** markilux offers more than 250 timelessly beautiful patterns of high quality – the decision is yours.



**Excellent design** markilux has the awning that matches your home both from the outside and inside.

***markilux***



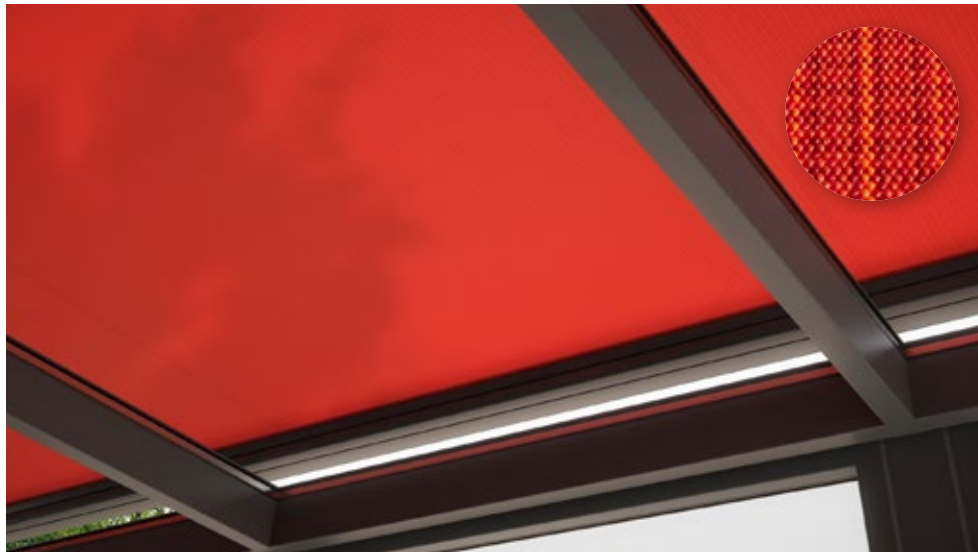


# The most beautiful fabric between heaven and earth.

**Unique covers create special ambience** It is the colour and quality of the awning fabric that make the ambience on your conservatory and patio special. Colour nuances, patterns and textures create that uniquely special effect, depending on brightness and hue.

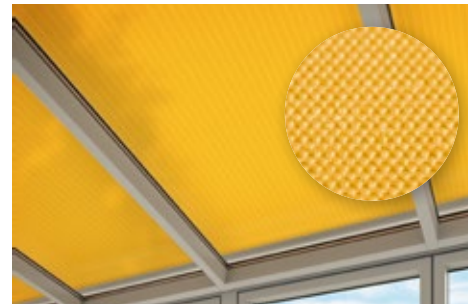
As a leading manufacturer of high-grade awning covers with almost 100 years experience in the manufacture of textiles, markilux offers unparalleled variety. The markilux textile design team is constantly developing new patterns in line with the latest trends which are nevertheless characterised by their timeless nature. Among the more than 250 patterns in thematically coordinated colour families, you are certain to find your very own “most beautiful fabric between heaven and earth”.

## visutex



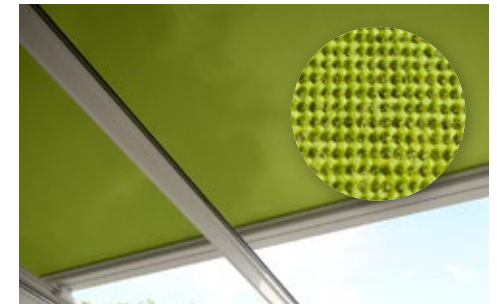
**The markilux exclusive collection** Discover the subtly balanced textures and powerful colours of a particular vibrant weave. These unique awning fabrics are available exclusively and without surcharge only from markilux.

## sunsilk



**Brilliant luminosity. Silky smooth surface.** sunsilk awning covers impress with their unique luminosity.

## sunvas



**Soft glow. Textile like to the touch.** sunvas awning covers score with their textile character and natural appearance.



# Functionality can be so beautiful.

**Awning covers “Made in Germany”** We manufacture awning covers that offer your home that special something and remain in top shape for a long time. These high-tech awning fabrics are manufactured at the location in Emsdetten / Germany according to stringent quality standards. The yarns are dyed using a process developed by us and show their effect in up to 16 million colour nuances with outstanding luminosity and colour intensity. The result is functional textiles which set exceptionally high standards in terms of quality, UV protection, easy of care and appearance. markilux awning covers are available in the qualities “sunsilk” or “sunvas” or as fabrics in our markilux specials collection serving particular requirements.

## Specials collection



**transolair** Solar protection with with a view. The sunvas fabric with special perforating technique stands for comfortable transparency and good light and air permeability. Air can circulate between cover and window. This effectively reduces heat accumulation.



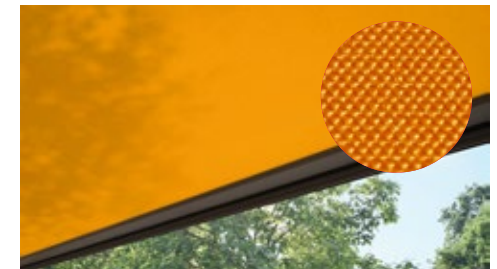
**perfortex** Ideal for conservatories. The aluminium coating reduces the heat exposure. Woven-in reed gaps make the fabric permeable to water and air.



**vuscreen ALU** Solar protection with Klimaplust. Better room climate with a good view to the outside thanks to the aluminium particles on the high-tech fibres.



**perla** The highly water-repellent sunvas fabric optimally protects from sun and rain.



**perla FR** The flame-resistant and water-repellent sunsilk fabric complies with stricter fire protection regulations.





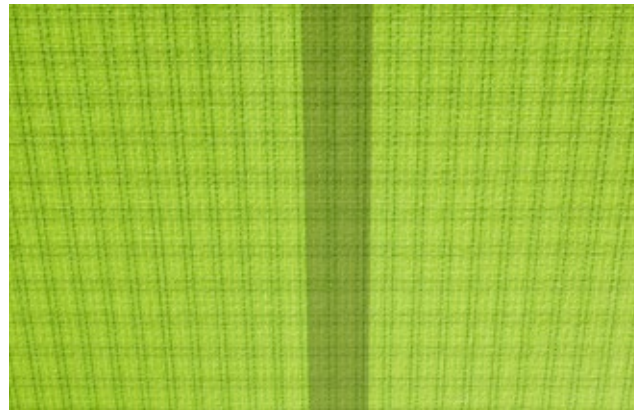
**markilux sunsilk and sunvas** In the production of our awning fabrics we leave nothing to chance. We produce exclusively in Germany using the most modern weaving technology. With the snc-finish, developed in our own company, we add the finishing touch to the fabric. This gives our awning covers a particularly long service life and the required resistance against rain, light and fluctuations in temperature. Certified according to Oeko-Tex Standard 100, they are guaranteed free from harmful dyes or chemicals.

With an Ultraviolet Protection Factor (UPF) of 50+, all markilux awning covers made from sunsilk and sunvas offer the highest possible degree of UV protection under an awning. This means your skin's own protection factor is boosted more than 50 times. If you stay under the awning, this allows you to enjoy sunny days for longer without a problem.\*

**He who seeks shall find** The most beautiful cover for your designer awning can be found among the more than 250 cover patterns at your markilux specialist dealer's showroom or at [markilux.com](http://markilux.com)



**Self-cleaning snc-effect** Water droplets pick up dirt particles and run off the awning cover (a pitch of at least 14 degrees of the awning is required). For years of enjoyment from beautiful textiles.



**Bonded awning covers** Panel joints bonded together ultrasonically ensure a homogenous appearance. Excellent resistance to water, light and temperature extends the service life of the cover.



**Light, weather and colour resistance** Well-dyed high-tech yarns and a high-grade cover finish enveloped in house are guarantors for the most beautiful shade in the world – for years to come.

\* Protect your skin with care! Do not spend longer periods outside without applying sun cream.  
The UPF afforded by the awning applies only to direct sunlight. It offers no protection against reflected sunlight (e.g. from water).

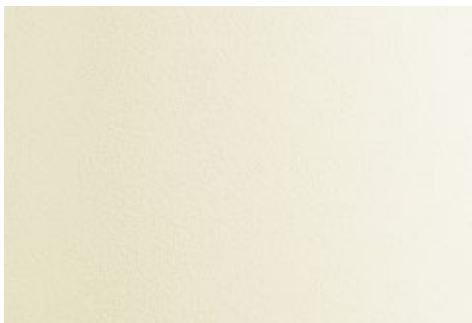


# They always hit the right note: markilux awning colours.

**Matches any type of architecture and your wishes** The awning frame colour enhances the colour effect of the fabric and together they create an ideal link to the architecture. From different shades of white nuances through to the timelessly elegant anthracite, a wide range of colours is available to you. Do you want to create a very particular colour scheme? No problem! We will gladly manufacture your dream awning in your own personal shade of colour. No matter for which awning colour you settle, high-grade powder coating is guaranteed.



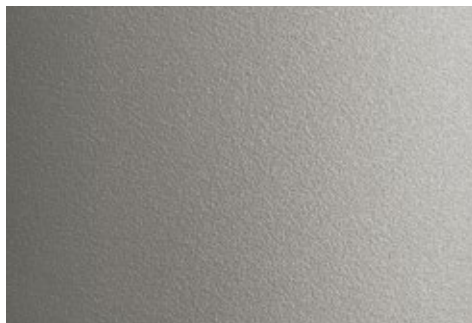
Traffic white RAL 9016



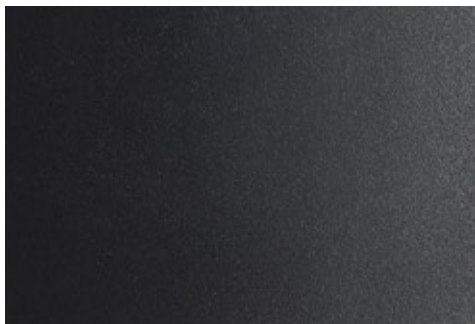
Off-white textured finish 5233



Metallic aluminium RAL 9006



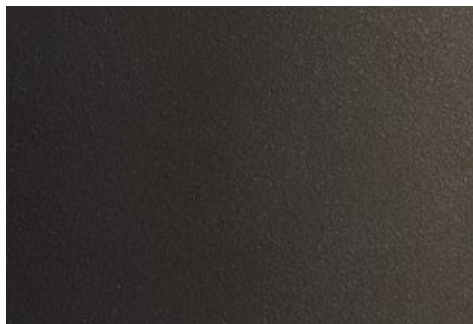
Stone grey metallic 5215



Anthracite metallic 5204



Grey brown RAL 8019



Havana brown textured finish 5229



RAL colour of your choice







# Intelligent solutions down to the detail.

**Optimal function is the sum of perfect details** markilux design awnings are made for problem-free use also in difficult weather conditions. We continuously work at the development of new, even better solutions to always offer our customers the best possible quality. We exclusively use materials and technologies that even meet the strictest of requirements so you can enjoy your markilux for a long time.



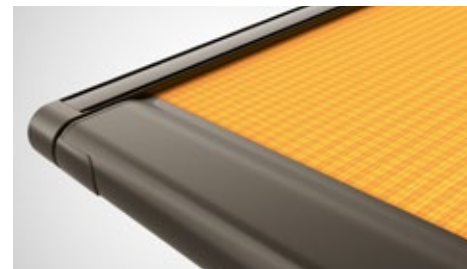
**Double unit** A perfectly adapted range of brackets permits the installation of several units next to each other – for XL shade.



**Compact square enclosed cassette**  
For all who prefer a clear design.



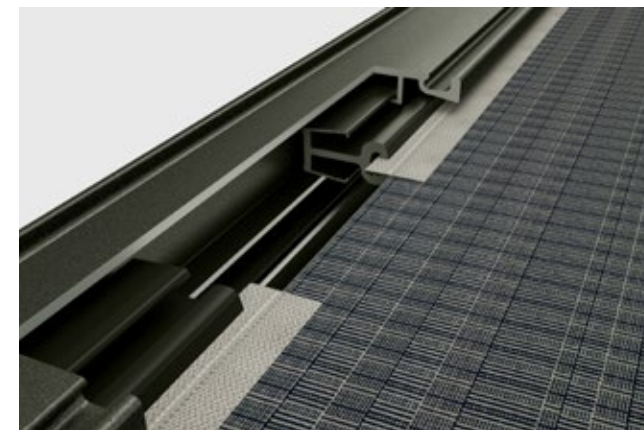
**Elegant round enclosed cassettes**  
For all who love flowing shapes.



**Flush front profile** Completely extended it closes flush with the guide tracks.



**Cover caps and profiles for guide tracks** Optionally complement the design, depending on the model.



**markilux tracfix** One of many markilux sophisticated features: the lateral cover guidance without gap between awning cover and guide track. For a more beautiful overall appearance and better wind stability.

**Perfect cover fit** A high cover tension is achieved by way of two special gas-pistons operating independently of one another in the front profile. In the markilux 780 / 880 the proven vario belt tensioning system ensures cover tension. markilux design awnings for conservatories are very quiet – noise-optimised retraction gliders ensure a low-noise closing action.





# Make it easy and comfortable.

**Operation has never been more comfortable** The choice is yours: Manual operation, motor and radio-controlled motor with remote control are possible depending on the model. Optionally sun, wind and rain sensors provide intelligent control of your markilux design awning, or you operate it directly or while you are out via smart phone or tablet. Your markilux specialist dealer is at your disposal should you have any questions regarding the markilux operating comfort and will provide you with details on how you can design your favourite spot even more attractively with light and warmth.



**Home automation** Easily control your awnings by smart phone or tablet – also from away from home. The smart control with io technology via app makes it possible.



**Intelligent controls** With sun, rain and wind sensor your markilux reacts to any change in the weather. In sunny conditions the design awning extends automatically, with wind and rain it retracts.



**markilux radio-controlled motor** Perfect protection from the sun, glances and glare comfortably at the touch of a button.

**markilux 870 / 879** Whether as awning for installation on the glass surface for your conservatory or underglass awning for the patio roof. Discover the many possibilities and the most beautiful shade in the world.



# Models and options







# Always on top when you need it.

**markilux 8800** Excellent solar protection for up to 36 m<sup>2</sup> with only one cover. Even larger glass surfaces can easily be shaded with a coupled unit.

**Conservatory glasstop awnings** Enjoy life in the conservatory also on hot days. Your markilux glasstop awning reflects glaring sun, UV-light as well as a large part of the heat radiation and at the same time immerses your conservatory in comfortably natural daylight. The heat remains outside while you enjoy being inside. Whether small or large glass areas, classic or hipped roofs – enjoy comfortable temperatures, spare yourself switching on the AC unit and create your very own conservatory dream.



**Excellent design** Elegant and functional. The enclosed cassettes of the markilux 8800 and 8850 protect the cover in wind and weather.

**Perfect for hipped roofs** The lateral guide tracks of the markilux 8850 can be indented by up to 100 cm.













**markilux 870** Shade up to 400 × 400 cm in a stylish manner and enjoy the comfort and the quality of markilux for many years.

**markilux 770** Both this square awning for installation on the glass surface and its round counterpart, the markilux 870, are very quiet. Noise optimised retraction gliders ensure low-noise closing action.



**Square. Practical. Small.** Exceptionally compact with only 125 × 125 mm the square full cassette of the markilux 770 protects the awning cover.



**A round matter** With only Ø 130 mm the cassette of the markilux 870 harmoniously nestles against the conservatory and provides all-round protection to the retracted cover.



**markilux 780 / 880** The economical solution for small areas. The vario-belt tensioning system provides optimum cover tension up to wind speed 6. Individual units mounted directly next to each other can be operated separately.



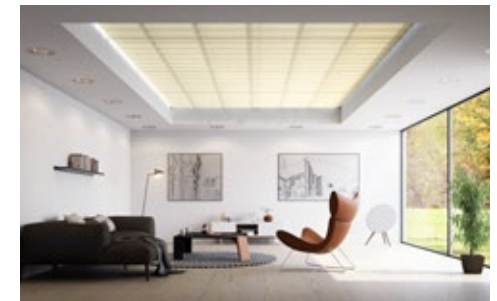
# Entre nous. Under glass. The best for your patio roof.

**markilux 879** The round counterpart to the markilux 779 for all who prefer flowing, softer shapes.

**Underglass awnings for patio roofs** Spend the day outside in your own garden, below a protective roof. The markilux design awnings promise best protection from too much sun and lend your very own outdoors textile cosiness. The cover is extended under the patio roof protected from dirt, wind and weather. All markilux underglass awnings impress with compact enclosed cassettes that adapt harmoniously to the patio roof. A variety of lighting equipments perfect the ambience in the evening. Discover your options from page 26.



**markilux 780 / 880** The most economical solution for small areas. The vario-belt tensioning system provides optimum cover tension up to Beaufort 6. Individual units mounted directly next to each other can be operated separately.



**markilux roof festoon** In closed inside rooms the roof festoon, which is affixed below the glass, creates a pleasant light atmosphere.

**markilux 779** The robust, square enclosed cassette with a variety of lighting options for your oasis of wellbeing. Up to 600 cm wide and with a projection of up to 450 cm or up to 400 cm width with a projection of 600 cm.







# So you will always see an atmospheric light.

## Optional LED lighting for the underglass awnings markilux 779 / 879



**LED spotlights at the cover support tube** Put your favourite spot skilfully in the limelight and enjoy the evening in atmospheric light. It can be dimmed and pivoted. With the markilux 779 it can also be mounted at the cassette.



**LED line in guide tracks and cover support tube** Energy-efficient, stylish and like all markilux lighting modules comfortably dimmable by means of remote control.



**Discreet cable guidance** markilux design with attention to detail: The cable guidances of all lighting options are discreet and covered in a stylish manner.







# Light, warmth and comfort for your place of comfort.

markilux extras for conservatories and patio roofs



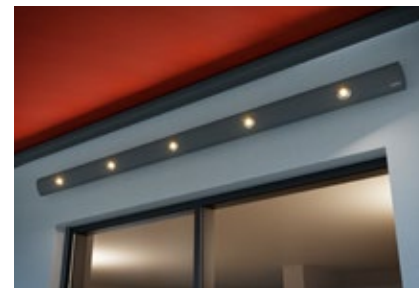
**markilux panoramic windows** You would like to sit outside below your patio roof protected from wind and weather and still enjoy the clear view to the outside? For the vertical cassette awnings markilux 776 / 876 with tracfix we offer you the markilux panoramic window. Max. awning dimensions 600 × 300 cm. Max. height of the panoramic window approx. 135 cm.



**Side screen markilux 790** Protects from low-lying sun, wind coming from the side, and prying eyes. Height max. 250 cm. Extension max. 450 cm.



**markilux infra-red heater** Feel the warmth immediately and enjoy the evening for longer. Durable in protected housing. 1400 or 2000 Watt.



**markilux spotlight LED** Turns the night to day. The elegant, freely mountable light bar in the powder-coated housing. LED spotlights, pivoting and dimmable, adjustable light colour, available in three lengths: 120 / 180 / 300 cm.



**markilux hotspot** Atmospheric light and warmth until late at night. Four halogen and two infra-red heaters perfectly united in housing. Available in awning colour. Freely mountable. Length: 300 cm.

**Vertical design awnings for conservatories and patio roof** Simply mask out outside glances and low-lying sun. Sit protected from wind and weather. Enjoy the warmth of the day for longer. Additional vertical design awnings from markilux make your outdoor private room perfect.

**Design your very own outdoors** markilux offers best outdoor living comfort. Your markilux specialist dealer will competently provide you with details about your possibilities, or refer to [markilux.com](https://www.markilux.com)





markilux 8800



markilux 8850



markilux 770



markilux 870



<b>Max. width × projection</b>	700 × 450 cm / 500 × 700 cm 600 × 450 cm / 500 × 600 cm tracfix	650 × 400 cm 500 × 500 cm	400 × 400 cm (tracfix)	400 × 400 cm (tracfix)
<b>Cassette dimensions</b>	Ø 210 mm	Ø 210 mm	125 × 125 mm	Ø 130 mm
<b>Operation type</b>	<b>Motor</b> optional Radio-controlled motor* Silentec motor	<b>Motor</b> Radio-controlled motor*	<b>Motor</b> Radio-controlled motor*	<b>Motor</b> Radio-controlled motor*
<b>Cover guidance</b>	<b>Guide tracks</b>	<b>Guide tracks</b>	<b>Guide tracks (tracfix)</b>	<b>Guide tracks (tracfix)</b>
<b>Cover tension</b>	<b>Gas pistons</b>	<b>Gas pistons</b>	<b>Gas pistons</b>	<b>Gas pistons</b>
<b>Wind resistance class</b>	<b>3</b>	<b>2</b>	<b>3</b>	<b>3</b>
Wind speed	6 → 38 – 48 km/h	5 → 28 – 37 km/h	6 → 38 – 48 km/h	6 → 38 – 48 km/h
<b>Options **</b>	tracfix Coupled unit			

Awnings for installation on top of the glass and under it

Underglass awnings for patio roofs

Indoor solar protection

markilux 780



markilux 880



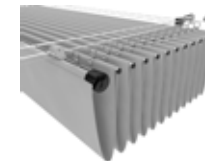
markilux 779



markilux 879



markilux Roof Festoon



400 × 250 cm 325 × 400 cm	400 × 250 cm 325 × 400 cm	600 × 450 cm / 400 × 600 cm 600 × 400 cm (tracfix)	600 × 450 cm / 400 × 600 cm 600 × 400 cm (tracfix)	400 × 422 cm 200 × 610 cm
95 × 95 mm	Ø 115 mm	125 × 125 mm	Ø 130 mm	—
<b>Manual operation</b> (only underglass) Motor Radio-controlled motor*	<b>Manual operation</b> (only underglass) Motor Radio-controlled motor*	<b>Manual operation</b> Motor Radio-controlled motor*	<b>Manual operation</b> Motor Radio-controlled motor*	<b>Cord pulley system</b> Crank (up to 100 cm width)
<b>Guide tracks</b>	<b>Guide tracks</b>	<b>Guide tracks</b>	<b>Guide tracks</b>	<b>Stainless steel wire</b>
<b>Vario belt tensioning belt system</b>	<b>Vario belt tensioning belt system</b>	<b>Gas pistons</b>	<b>Gas pistons</b>	—
<b>3</b> 6 → 38 – 48 km/h	<b>3</b> 6 → 38 – 48 km/h	<b>2 – 3 depending on size / 3 with tracfix</b> 5 → 28 – 37 km/h 6 → 38 – 48 km/h	<b>2 – 3 depending on size / 3 with tracfix</b> 5 → 28 – 37 km/h 6 → 38 – 48 km/h	—
Cover profiles for lateral cover gaps	Cover profiles for lateral cover gaps	LED spotlights at the cassette and / or at the cover support tube LED line at the guide tracks and / or in the cover support tube tracfix	LED spotlights at the cover support tube LED line at the guide tracks and / or in the cover support tube tracfix	

**markilux**



Ideas, detailed information, professional advice and the most beautiful awning cover patterns can be found at your markilux specialist dealer and at [markilux.com](http://markilux.com)

[markilux.com](http://markilux.com)

***markilux***  
safe timeless beautiful